



Summer 2015

NETWORK

CONNECTING YOU TO THE **GOLD** STANDARD

International Silver Sponsor



Sunbrella® fabrics debuted in 1961 as an alternative to the most popular awning fabric at that time, cotton. Sunbrella offered the rich look and feel of cotton, but did not fade or degrade, even in the brightest sun, and offered years of care free service. In the mid 70's boaters soon discovered the good looks and durability of Sunbrella fabrics for boat tops and sail covers. Around the world today, Sunbrella is the No.1 fabric choice for power boaters and sailors, enjoying universal name recognition synonymous with quality and durability.

Glen Raven Custom Fabrics, the makers of Sunbrella fabrics, took this winning formula - high-performance fabric with the look and feel of cotton - to the outdoor furniture industry. Marketing umbrellas and furniture cushions made with Sunbrella fabrics as fast drying, durable, easy to clean and beautiful. Over the years, all of the nation's leading casual furniture manufacturers have adopted Sunbrella fabrics for their premium furniture lines. Fade resistance, durability and popular colors have made Sunbrella a leader in these markets. While Sunbrella was gaining recognition in the great outdoors, Glen Raven was preparing Sunbrella to come inside the home. Thanks to intricate jacquard weaving, innovative yarn constructions and advanced fabric finishes, the design and manufacturing teams at Glen Raven created Sunbrella fabrics that match the look and feel of fine interior fabrics.

Today you will find Sunbrella throughout the home, from decks, patios and poolside, to dining rooms, family rooms and even kitchen and bath. Sunbrella delivers a complete package of color, design, durability, fade resistance and ease of cleaning. Design and performance creativity will continue to be the focus for Sunbrella fabrics. Wherever people demand fabrics that are beautiful, comfortable and dependable, Sunbrella will be there with fashion, right colors, designs and textures.

President's Message



Greetings, Fellow Industry Leaders and Colleagues,

Welcome Summer, warm easy living, focus on outdoor activities...how does Summer influence our psyche, design direction? How do we as a design community enhance community and family life?

As members of IFDA, we are committed to raising the level of design as it supports life activities...in terms of functionality, availability, and exquisite design. I am very proud and inspired by our members who have stepped up to the plate to recognize "best of show" vendor offerings through our "IFDA Select" Awards recognition program at the recent NYC and Las Vegas Trade Shows. This goes a long way to raise awareness as to the expertise and vision of our professional members.

In my experience with IFDA, participation is the key to maximizing the benefits of membership. If you have an interest, get involved on a committee. If you see a need, be part of the solution, either by joining or starting a committee. This is a great way to get to know your fellow members...both locally, and internationally, and to grow your leadership skills. If you are looking for opportunities to get involved on a local level, check in with your local chapter board members for direction. Take a Seat 2015 is ramping up once again, and there are many opportunities to participate there...and, have lots of fun in the process. On an international level, we have the Marketing Committee, Network Newsletter Committee, Speakers Bureau Committee, Sponsorship Committee, Webinar Committee, Website Committee, Corporate Membership Task Force, Membership Growth Committee and the Strategic Marketing Committee...to name a few.

Talk to your local Chapter President or leaders to see what might be a good fit for you. And, as always, Jennifer Jones, IFDA Executive Director, is an amazing resource if information and support to all of our members.

With honor and deep respect, I look forward to working with all of you during the coming term.

Warm regards,

Diane Nicolson

Diane Nicolson, IFDA

Michael Graves (1934 – 2015)

Michael Graves was a lifetime member of IFDA, affiliated with the Philadelphia Chapter, and the recipient of the IFDA Trailblazer Award in 2000.

The IFDA Trailblazer Award is presented annually to a person who has been responsible for an innovation that meaningfully alters the way some aspect of the furnishings and design industry functions or is perceived.

A Trailblazer is a person who, in the last five years, has consistently demonstrated leadership qualities and who will continue to affect the industry in blazing future trails. Nominees may be a member or a non-member of IFDA.

A Trailblazer is: creative and innovative; an influence on an international scale; a recognized leader in the profession; a contributor to the industry at large.

Michael Graves was a Trailblazer!

In the March 13, 2015 issue of *The New York Times*, Michael Graves' life, accomplishments, and honors are noted and shared.

The editor wrote "... one of the most prominent and prolific American architects of the latter 20th century, who designed more than 350 buildings around the world but was perhaps best known for his teakettle and pepper mill ..."

Early on, he was associated with the New York Five (architects who helped redefine modernism in the 1970's). In addition to major buildings, he designed over 2000 everyday consumer products for companies like Disney, Steuben, Alessi and Target (*including the Target teakettle*). He taught and inspired his students for four decades at Princeton University.

He was awarded, by President Bill Clinton, the National Medal of Arts and, in 2000, he received the American Institute of Architects' Gold Medal.

The New York Times also mentioned that recently he helped establish the Michael Graves School of Architecture at Kean University in New Jersey.



IFDA WEBINAR

Time Management and Sustainable High Performance for the New Year

Presented by: Elaine Betts, Go Far Consulting

Recorded: January 14, 2015

[Click here](#) to purchase the recording today!

Questions? Contact Jennifer Jones, MPA, Executive Director at 610-992-0008 or jjones@ifda.com.

IFDA Chapter News

Carolinas Chapter High Point Market

Submitted by Dawn Brinson, IFDA, VP of Communications

April saw IFDA members from across the country converging on the High Point Market, the semi-annual event drawing nearly 85,000 home furnishings and décor buyers, exhibitors, educators, suppliers, media and others. Carolinas Chapter and all attending IFDA members were invited to the 200 Steele cocktail party on Sunday, April 19th. Although spring showers dampened the day, the mood was upbeat and festive. Old friends renewed their ties and new relationships brought IFDA'ers fresh opportunities for networking and partnership. Our thanks to 200 Steele for including us in their event.



Deanne Lorenti, Philadelphia Chapter; Kelly Logue, Georgia Chapter; Kathleen Koch, Carolinas Chapter; and, Jeri Soloman, Illinois Chapter at the 200 Steele party.

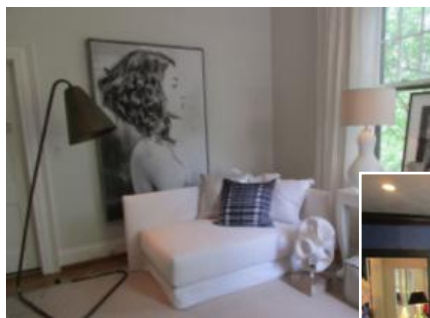


Robin Gainey, Carolinas Chapter with Claudia Giselle Tejeda and Rose Ott of the New York Chapter at the 200 Steele party.

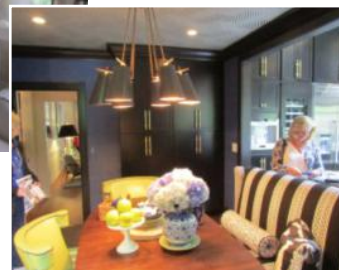
At the close of the Market, Carolinas Chapter members and guests gathered for a wind-down lunch and tour of the 2015 *Traditional Home* show home, located in downtown High Point. The 1912 Terry Estate was transformed by designers from around the country and will be featured in a fall issue of *Traditional Home*.



The living room incorporates classic elements with transitional looks and an unexpected layering of blues to create a space that is distinctive and livable. All the fabrics are weather-resistant and soil-proof, a nod to Mr. Terry's seven golden retrievers.



The private lounge features grand-scale pieces such as the sculptural lamp and original photography juxtaposed against cozy elements like the sheepskin throws and layered floor coverings.



The breakfast room adjacent to the completely remodeled kitchen reflects the home's roots in the Art Deco period, characterized by bold geometrics (not the ceiling) and significant ornamentation. The walls are covered in cobalt grass cloth; the dining chairs are chartreuse leather. The onyx cabinetry is from Marsh Cabinets.

IFDA Chapter News

Florida Chapter In Memoriam

IFDA mourns the loss of Myra Schwartz, FIFDA, who passed away on Sunday, April 12, 2015.

Myra joined IFDA on January 1, 1992 and served in various leadership positions in the Florida Chapter including Chapter President, Treasurer and Vice President of Communications. In addition to her tenure of service as a committed volunteer leader of the Florida Chapter, Myra was a past member of the Association's Nominating Committee and served in multiple leadership positions within the IFDA Educational Foundation including Chair in 2013. A recipient of the IFDA Honorary Recognition Award in 2011, Myra achieved the designation of IFDA Fellow in 2013.

Myra received her BFA in Fine and Studio Arts from the School of Art and Design Institute of Chicago and a certificate in Culinary Arts Design from Purdue University. President of Myra R. Schwartz Associates, Inc., she was an accomplished commercial interior designer, specializing in hospitality and healthcare design. Myra was a talented concert pianist. An active member of the



Myra Schwartz, FIFDA

Boca Raton community, Myra was a member of the choir at Temple Beth El and served as a volunteer with a host of local organizations including the Boy Scouts of America, the Boca Raton Historical Society and the Pride Center of Florida.

Funeral services were held in Boca Raton on April 13th. Myra is survived by her daughters Lori Shapiro and Sheryl Martin (husband Rollie), grandchildren Jeremy and Stefani Martin and Elizabeth and Adam Shapiro, great-grandchildren J.R. and MacKenna Martin and her sister Ellen Gacke (husband Leonard).

Donations in Myra's memory may be made to Temple Beth El, 333 SW 4th St Boca Raton, FL 33432.

Myra will be remembered for her charm, friendship and continued dedication to IFDA. To share your memories of Myra, please [click here](#) to access her memorial guestbook.

Myra will be remembered for her charm, friendship and continued dedication to IFDA.

Florida Chapter Capitol Lighting Launches Designer Saturdays with IFDA

Submitted by Marsha Koch, VP of Communications

IFDA Florida Local Sponsor Capitol Lighting has launched a new program called Designer Saturdays. IFDA members were invited to participate by registering to meet with Capitol Lighting Customers who were seeking interior design guidance. As customers signed up for their appointments they were asked to describe their decorating needs, style and any specific lighting they might be looking for.

This was a win win for all. Capitol Lighting gave their customers an opportunity to consult with an Interior Designer and we met potential new clients. You have heard of "Speed Dating"? This was a little like "Speed Interior Design Consulting! Great idea!

Thanks to Capitol Lighting for giving IFDA the privilege of participating in your Designer Saturday pilot program.



Five Florida members met with a total of fifteen customers who were assigned time slots for their consultations. We also were paired with a Capitol Lighting Consultant to assist with lighting selections and information ... and breakfast was served!



Seen above are Eric Lebersfeld, President of Capitol Lighting, Sianne Chong, Marketing Manager, Andy Perez, Boca Raton Showroom Manager, Dawn Bonadies Palm Beach Gardens Showroom Manager, IFDA members, Leah Keitz FIFDA, Jeannie Coppers, and Elizabeth Zecca with Capitol Lighting CEO Ken Lebersfeld. (Also participating were IFDA Florida President Caroline Rogow and member Marsha Koch.)

IFDA Chapter News

Florida Chapter

Maison & Objet Americas brings Paris to our backyard

Submitted by Marsha Koch, VP of Communications

Did someone say Paris? Yes, the acclaimed Maison & Objet Design Fair for the Interior Design trade set sail this month for its debut in Miami. Previously M & O was only held in Paris. It was exciting to be able to get a taste of this incredible event right here in Miami.

Florida Chapter members and friends gathered inside the exhibit hall, ready to be awed and inspired. We were not disappointed.

What is so wonderful about going to a show like Maison & Objet is being able to experience the talents of designers and artists from all over the world. From the most sophisticated to the most unpretentious, each stood out in its own way. Every time I started down an aisle I couldn't wait to see what popped out next.

This is just a small glimpse into what was shown at Maison & Objet Americas. In addition to furniture there was lighting, textiles, home fashions, rugs, art, accessories, outdoor furniture, bathroom fixtures, and more. The Summit offered presentations by successful designers and experts who shared their stories and ideas with their audience. Plans are already in the works for next year!

There was so much to see we all scattered like kids in a toy store. It was incredible. Though much smaller than the one in Paris, we were thrilled to be able to see developing trends, artisans and exhibitors from all over the world.



First row: President Caroline Rogow, Members Susan Heller, Lynn Sciarbone, Beverly Stewart, friend Ellie Caimano, and Member Marsha Koch. Back row: Members Vicki Kirsner, Elizabeth Zecca and friend Karla.



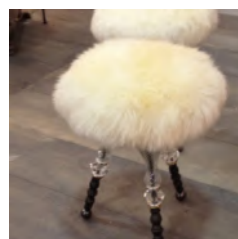
Trussardi greeted us as we entered the exhibit hall. This Italian Fashion House now has it's own furniture line called Trussardi Casa.



What's different about this sectional? I think it is the way the back cushions are made to look like toss pillows.



The creativity was dazzling and inspiring. The light fixture is nothing more than a piece of parchment paper crinkled up by the hand of a talented Junior Fritz Jacquet who creases and molds sheets of paper and cardboard into stunning works of art all without the aid of cutting or pasting!



It was interesting to see how many different types of materials could be used to fabricate a chair. This was not the only furry one. How do you dress up a powder puff chair? Add crystal legs!



Look at what artist Corinne Campenio did with her art. You have heard of "wearable art"? This art is "sittable".

IFDA Chapter News

Florida Chapter

Maison & Objet Americas brings Paris to our backyard

Submitted by Marsha Koch, VP of Communications



Furniture was a big part of Maison & Objet. The vendors came from all over the world. It was a sort of mini world tour. Perhaps because of being in the midst of planning for Take a Seat, the fabulous chair designs were particularly fascinating. This colorful chair reminds us of a carnival, maybe that's because it was crafted in South America by award winning Colombian designer Ramon Laserna! It is made from string.



I think I remember lacing pieces of leather together when I was a Girl Scout. What a creative way to design a chair. In fact this could be done on an old chair frame as a way to recycle it, perfect for an entry into Take a Seat!



The Line Chair also designed by Toni Grilo for Rulic, the Portuguese contemporary furniture brand, is brilliant in gold.



Sleek, natural, and organic but elegant, this pair pleases the eye as well as the seat.



The variety of chairs was such fun to see. Some were sleek and elegant, or natural and organic, others were whimsical like the one below wearing toe shoes!



Speaking of organic, this outdoor chair feels very earthy. It would blend right into the scenery of any garden. Opiary fabricates everything from recycled materials here in the United States.



This dramatic couple outshines most with their bright gold finish. I felt like some of the designs were more works of art than a functional piece of furniture like this couple.



What came first, the shelf or the barstool? Maybe an old chair with broken legs can be repurposed?

IFDA Chapter News

Illinois Chapter

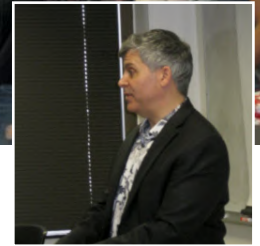
Illinois Chapter Speaks to Design Students

Submitted by Joan Scheib, Co-VP of Communications

A few times a year the Illinois Chapter meets with design students at the Illinois Institute of Art (IIA) (Schaumburg) and Harper College (Palatine) to discuss the interior design industry. On February 26th, Jeri Solomon, Chapter President and owner of just solutions, and Loren Reid Seaman owner of LRS Interiors met with the students at IIA. Jeri spoke about IFDA and the benefits of becoming a an IFDA student member and the advantages of attending the chapter's monthly events, the showroom and online resources available to designers and the knowledge and information shared by professionals at our chapter's round table discussions. Loren spoke about a specific project he was involved in with respect to the designing, building, and installation phases of a salon from space's shell walls. For those students taking architecture classes, conceptual design classes or materials classes this was a great hands-on example for them to relate to!



(l-r) Jeffery Acasio, Rita Starshinova, Loren Reid Seaman, Stephanie Ayala, Suzann Nordstrom, Alisa Klein, James McArthur, Stephanie Cole, Stephanie Schiesser, Macy Murray, Cedric Siler



Loren Reid Seaman, LRS Interiors speaking to the group

Steve Harvey Show at the NBC Tower in Chicago, April 30, 2015

Submitted by Joan Scheib, Co-VP of Communications

In the past the Illinois Chapter has held walking tours for the IFDA Educational Foundation Annual Fundraiser. We took in a dozen showrooms with their new product offerings in Chicago's Merchandise Mart, or a variety of local artist showings in the Galleria District, or the hip Andersonville area with the antique and bohemian shops. This year the Chapter Board decided to offer their members a unique outing: luncheon with colleagues followed by watching the taping of the Steve Harvey Show, concluding the outing with a "behind the scenes" look at what it takes to make a television show's set successful.

Kevin Grace, from HGTV's Design Star and set decorator for the Steve Harvey Show spoke to the IFDA Illinois chapter members after the completion of the taping of Steve Harvey Show giving us insights into television set design. Karen Fischer, VP of Membership, said "fascinating "behind the scenes" look and understanding of the TV production. Kevin presented wonderful insights into the creative aspects".

Kevin began his career as a window dresser for Marshall Fields that dovetailed into fashion design, where he held a position at Marshall Fields for 20 years. After competing on the HGTV Design Competition Show he opened his own business in Chicago. The Steve Harvey Show Art Team approached him and asked him to join them in making the set feel like Steve Harvey's home, giving it a comfortable feeling. In its first

season on the air, The Steve Harvey Show won an Emmy, so the decision was made this year to update both the stage set and audience chairs. And we are glad they did! They selected Michelle Gold furnishings to be used for quality, comfort and use for multiple seasons. In Season four Kevin has been able to add a few pieces of art and work on the design of the kitchen set build out. The job keeps him very busy with filming Tuesday through Thursday each week from September through May. Mary Kay Romanchuk said "it is very interesting to see how much creative planning and effort goes into taping 6 shows in 3 days with multiple segments for each show. It was a fun day spent with fellow IFDA members!"

Last minute changes are to be anticipated, along with getting new flowers daily and different punches of color through art and pillows. Kevin shared with us that this job has been his favorite to-date with his career with respect to design.

Overall, Penny Homscheid and Jeri Solomon summed up the day with: "it was a fun event, spending time with fellow IFDA members, behind the scenes question and answer session and lots of laughs!" What a great way to find out what goes on "in front of the cameras" and "behind the scenes"! It was a fun afternoon, but the best part was talking with Kevin Grace after the show."

IFDA Chapter News

Illinois Chapter

Steve Harvey Show at the NBC Tower in Chicago, April 30, 2015

Submitted by Joan Scheib, Co-VP of Communications



(l-r) Kevin Grace, Mollee Johnson, Jeri Solomon, 2nd row: Mary Kay Romanchuk, Karen Fischer, Joan Scheib, Tami Mirabella, Kathy Simon, 3rd row: Lindsay Dingmann, Kathryn Kraust, Penny Homscheid, Tina Dann-Fenwick, 4th row: Sara Reich, Julie Dunfee, Michael Bremnour

Minnesota Chapter

The Future of Gardenscaping: Environmental Trends Near & Far, Minneapolis

Submitted by Linda Hersom, IFDA Chapter Administrator, VP of Communications/Marketing

57 members and guests were given a rare opportunity to hear Heidi Heiland, renowned Twin Cities Master Gardener of Heidi's Lifestyle Gardens, talk about her journey to US coasts and other parts of the globe sharing her landscape designs and best management practices that highly respect and work in conjunction with Mother Earth. We saw a power point presentation of her own gardens, local projects and her recent trip to India with the MN Landscape Arboretum. Her inspiration motivated us to get into our own gardens as soon as the Minnesota landscape season is ready. Thank you to Heidi and also to Pat Evans, local KARE11 TV Anchor for introducing Heidi.



Heidi Heiland, Twin Cities Master Gardener, Heidi's Lifestyle Gardens



Pat Evans, Anchor, KARE11 television

IFDA Chapter News

Minnesota Chapter Lunch & Learn : The Latest Flooring Trends at House2Home Flooring, Ham Lake, MN

Submitted by Linda Hersom, IFDA Chapter Administrator, VP of Communications/Marketing

IFDA members were inspired with the latest and greatest product introductions at House2Home Flooring in April when representatives from Shaw and Mohawk spoke on features of their product lines. Those represented were: Dan Burch, Territory Manager, Mohawk Residential Carpet (Smartstrand); Steve Sipe, Territory Manager, Shaw Residential & Commercial Carpet (LifeGuard); Craig Crayford, Territory Manager, Shaw Hard Surface (Floorte); Jessica Potter, Territory Manager, Shaw Tuftex Carpets of California (Tuftex & Pet Protect). Many thanks to Mark and Candy Weisenberger (Current IFDA MN Chapter President) of House2Home for hosting this informative program and to Acapulco Restaurant for the fabulous lunch.



Flooring Group: Jessica Potter, presenting the new Tuftex line.



Co-Owner, House2Home, Mark Weisenberger demonstrating the differences in hardwoods.

Minnesota Chapter Lighting Trends and Technology, St. Paul

Submitted by Linda Hersom, IFDA Chapter Administrator, VP of Communications/Marketing

Lighting terminology can be overwhelming and unless you have an expert in the field to assist you with your requirements, your selection process could be difficult. On May 13, representatives at Creative Lighting gave a phenomenal overview on trends and technological development in the lighting industry with practical applications. We received 1) an overview of various light sources currently available to designers, including the latest in LED technology; 2) a comparison of light fixtures by wattage, voltage, lumens, Kelvin, and other criteria; 3) tips that will allowed us to specify fixtures with confidence; and 4) options for home lighting systems. This was an amazing program and we thank Michelle Savageau, IFDA Member and Lighting Expert at Creative Lighting for hosting this program.



IFDA members learn about lighting trends from Michelle Savageau



The latest in LED technology

IFDA Chapter News

New England Chapter IFDA NE Inaugural Take A Seat Program

Submitted by Karen Dzendolet, New England Chapter President

The IFDA New England Chapter featured 11 fabulous chairs for our chapter's inaugural *Take A Seat* program! As president of the Chapter, I would like to thank everyone involved for a wonderful first year!

The IFDA NE Take A Seat program encompassed three events: on May 13th, new IFDA New England member John Trifone and event sponsor through his company, Mitchell Gold+Bob Williams of Natick, MA, held the kick-off chair reveal and press event at their new showroom. The press was represented by regional and local media; they included our media sponsor for all three events, Boston Common, as well as Bronze Chapter Sponsor, New England Home Magazine, (member Kathy Bush-Dutton, publisher) as well as Design New England (member Molly Campbell, publisher).

Finelines, (member and CEO Karen Gilman) was our Sapphire sponsor, and Poggenpohl (member and past-president Rosemary Porto, and our sole Platinum Chapter Sponsor) was our Heart of Gold Sponsor.

Our photographer, and member, Elaine Frederick, is responsible for all our event photos!

Our first event at Mitchell Gold+Bob Williams on May 13th:



Justin Minda, Herrick and White, Bronze Sponsor, Chris Magliozzi, member, FBN Construction, Bronze sponsor, and Michael Hoban, Audio Concepts, Silver Sponsor.



Sean Cutting, member, Cutting Edge Homes, Renee Albano, member, Jewett Farms and Company, Ryan Cutting.



Dianne Ramponi, VP of Hospitality, and Vivian Robins, VP of Membership Retention



Paula O'Sullivan, member, in passenger seat; Ed Owen, European Auto Solutions, Raffle Sponsor of 4-day Mercedes Rental



John Trifone, IFDA NE member (3rd from left) with Event Sponsor Mitchell Gold+Bob Williams staff members.



Lynn Rousseau, Gary Rousseau, IFDA NE Treasurer, Herrick and White, Bronze Sponsor, Jennifer Driscoll IFDA NE VP of Programming, Broadview Marketing



Connie Kolman, chair designer and member, Kolman Artisan Glass and Allison Iantosca, F.H. Perry Builder



Edwina Drummond Boose, member and chair designer, with her chair



Karen Brown, sitting in her chair, Natural Selection



Debbie Bowen, past Chapter president, Karen Gilman, Finelines, member and Sapphire event sponsor, Jocelyn Hutt, DRS and Associates



From Woodmeister Master Builders, Event Sponsor; Chair Designers: Nelson Gomez and Ed Paquett



Vani Sayeed, member and her chair

IFDA Chapter News

New England Chapter IFDA NE Inaugural Take A Seat Program

Submitted by Karen Dzendolet, New England Chapter President

On May 20th, event sponsor, Woodmeister Master Builders, (member and Board member, VP of Future Directions, Sean Reynolds) held a cocktail event showcasing the chairs at their Boston, MA showroom. These first two events were held at no charge to attendees and we had well over 50 people at each event.

Silver Lining Patrons:

Clark Fine Art Services
Clarke Distribution (member Debra Burke) and also Bronze Sponsor FBN Construction (Chris Magliozzi and Bob Ernst, members) and also Bronze Sponsor Omnilite S+H Construction (Douglas Hanna, member)
Thread (Marie Chaput, member)
Venegas and Company (Donna Venegas, member) and Silver Chapter Sponsor Windover Construction

Giving Patron:

Stanhope Framers

In-Kind Patrons:

Fenway Printers
Robert Allen Design
Zimman's, Inc.

Our chair designers!

Edwina Drummond Boose, IFDA NE member
Edwina Drummond Interiors
Chair: Southie Space Saver
Connie Kolman, IFDA NE member
Kolman Artisan Glass
Partnering with F.H. Perry Builder, Allison Iantosca
Chair: Blue Ghost

Design Team: Nelson Gomez and Ed Paquette

Chair: Against the Grain

Design Team: David Harelson and John Stelmach

Chair: Cherry Pi

Design: Dave Thompson

Chair: Little Tree

Marilyn MacLeod, IFDA NE member

Lee Design

Chair: Fab Fortuny Faux

Lee Webster

Chairity Shop

Chair: Koi Chair

Mally Skok

Mally Skok Interior Design

Chair: Mally's Still Ikat Crazy

Karen Brown

Karen Brown Design Group

Chair: Natural Selection

Jill Gobeille

Studio North

Chair: Olivia

Vani Sayeed, IFDA NE member

Vani Sayeed Studios

Chair: Papillon

IFDA Chapter News

New England Chapter IFDA NE Inaugural Take A Seat Program

Submitted by Karen Dzendolet, New England Chapter President

Here are the IFDA NE TAS photos from our second event held at Woodmeister Master Builders, on May 20th.



TAS Chairs



Woodmeister Builders, Sean Reynolds, IFDA NE member and event sponsor (thanks to their build teams, as well!).



More TAS chairs



Karen Dzendolet, IFDA NE Chapter President



Gary Rousseau, IFDA NE Treasurer, Lynn Rousseau, Chris Komenda and Nelson Gomez, Woodmeister Master Builders, Event Sponsor (Member is Sean Reynolds, not pictured).



Sean Reynolds, IFDA NE member, Woodmeister Master Builders, Event Sponsor, Vani Sayeed, member and chair designer, Ana Bonita, and Beezee Honan, IFDA NE member, Designer Bath



Jacqui Becker, Past chapter president and current VP of Community Service, and Paula O'Sullivan, IFDA NE member.



Marilyn MacLeod, Lee Design, chair designer and IFDA NE member with her chair

IFDA Chapter News

New England Chapter IFDA NE Inaugural Take A Seat Program

Submitted by Karen Dzendolet, New England Chapter President

Our gala event, which culminated in our chair auction, was held on June 3rd at the Larz Anderson Auto Museum in Brookline, MA, with upwards of 130 attendees. It was an exciting event, with all the chairs again displayed, among the vintage motorcycles in the museum.

Dover Rug (member Mahmud Jafri, CEO) was our Red Carpet Sponsor, and he provided stunning rugs to be displayed with the chairs. Once all the guests had a chance to see the chairs, mingle and have a nosh and a drink, we directed everyone to move to a tent set up on the grounds of the museum, where more food, drinks and seating was provided. All the chairs were moved to the tent, where the auction took place!

I delivered remarks, along with other board members, which included welcoming our attendees and thanking our sponsors. Loni Willey, the executive director of our non-profit, the Women's Institute for Housing and Economic Development (WIHED) delivered a presentation that highlighted the depth and commitment of her award-winning affordable housing development organization, focusing on projects throughout Massachusetts and Connecticut (www.wihed.org).

The auction itself was fast-paced! Our auctioneer, Tom Weitbrecht, skillfully handled the bids, while the sun was going down! We are happy to report that we raised \$16,100 for WIHED in our first Take A Seat auction!

We were honored that members from two other IFDA chapters joined us at our gala; Maureen Klein, IFDA Take A Seat Founder and her husband, Bob, from the New York Chapter, and Caroline Baer Rogow, Florida Chapter President and Florida Chapter member, Laurie Planamento.

At the helm of our Take A Seat planning and execution was Jennifer Driscoll, the VP of Programming. She did an outstanding job! Jennifer and I co-chaired the local TAS committee, and with the following chapter members: Jacqui Becker (a past president of the chapter), Linda Mariani and Carolyn Meek (both past Chapter presidents and both FIFDA, with Carolyn currently serving on the National EF board), Edwina Drummond Boose, also a chair designer, Brittany Shellington (her company, AllState Glass is a Silver Chapter Sponsor), Chris Saad, current Communication VP, whose company, Audio Concepts just became a Silver Chapter Sponsor, Gary Rousseau, current Treasurer, whose company, Herrick and White is a Bronze Chapter Sponsor. We also partnered with the Builders and Remodelers Association of Greater Boston, BRAGB, and their executive director, Lorraine DeVaux and BRAGB member, Tracey Hartford, also served on the committee.

The entire IFDA NE Chapter Board was extremely supportive; in particular, our Hospitality VP, Dianne Ramponi was responsible for managing the greeting of every guest at all three events; this included name tag preparation, confirming payment and anything else required. Vivian Robins, VP of Membership Retention and member Paula O'Sullivan worked with Dianne, and the three together did a wonderful job at our gala event!

Board member Gary Rousseau, and his company, Herrick and White, as well as Board member Sean Reynolds and his company Woodmeister Master Builders, and event sponsor, handled the moving of the chairs from event to event. Chris Saad helped in a variety of ways, including finding the A-V company that provided our sound system for the gala.

Jacqui Becker, our current VP of Community Service and past Chapter president, worked extensively with our non-profit, the Women's Institute for Housing and Economic Development, to make sure that they were full participants in all three events.

We couldn't have been successful without all our sponsors; in addition to the sponsors already mentioned, the following provided us with support:

In light of holding our gala at a vintage car and motorcycle museum, European Auto Solutions of Waltham, MA donated a 4-day "rental" of a 1977 Mercedes 450-SL convertible coupe to one lucky raffle winner. And thanks to Jacqui Becker, for being our best raffle ticket seller!



The Larz Anderson Museum – Brookline, MA – location of the TAS Gala

IFDA Chapter News

New England Chapter IFDA NE Inaugural Take A Seat Program

Submitted by Karen Dzendolet, New England Chapter President



Fab Fortuny Faux Chair – Marilyn MacLeod, Chair Designer and IFDA NE Member



Cherry Pi – Woodmeister Master Builders, Sponsor of TAS Cocktail Event on May 20th



Matthew Gallagher, Broadview Marketing; Chris Saad, VP of Communications, IFDA NE, Audio Concepts, Silver Annual Sponsor; Justin Minda, Herrick & White; Michael Hoban, Audio Concepts; Bob Ernst, member, and CEO of FBN Construction - Bronze Annual Sponsor and Silver Lining Event Patron; and Mahmud Jafri, member and CEO of Dover Rug and Red Carpet Event Sponsor



Mally's Still Ikot Crazy – Mally Skok, Chair Designer



Caroline Baer Rogow, IFDA Florida Chapter President, and Laurie Planamento, member – Florida Chapter, and Carolyn Meek, FIFDA, IFDA NE member and EF national board member



Dianne Ramponi, VP of Hospitality, Vivian Robins, VP of Membership Retention and Paula O'Sullivan, member.



Maureen Klein and Jennifer Gear – IFDA New York Chapter



Karen Dzendolet, New England Chapter President, working with Ed Owen for the raffle drawing – Ed Owen, Raffle Sponsor – European Auto Solutions



From left to right: Laurie Gorelick, IFDA NE Recording Secretary, Vani Sayeed, IFDA NE member and chair designer, Ana Bonita, and Deborah Berger, IFDA NE member.



Jennifer Driscoll, VP of Programming, looking on at the auction!



Chris Magliozzi – member and VP of FBN Construction - Bronze Annual Sponsor and Silver Lining Event Patron



Ted Goodnow, Paul Guitard and Brooke Goodnow, Woodmeister Cocktail Event Sponsors (Sean Reynolds, not pictured, member)



The Auction in the Tent!

IFDA Chapter News

New England Chapter Members in the News

Rosemary Porto of Poggenpohl Boston is honored to be a regional winner in the Sub-Zero and Wolf Kitchen Design Contest. She will go on to the Best of the Best Winners' Summit and Gala in Scottsdale, Arizona, where the national winners will be announced in September. The regional winners were announced at An Evening to Remember, hosted by Clarke, New England's Official Sub-Zero & Wolf Showroom and Test Kitchen. Two other designers, Heather Kahler and David Hacin, were also honored.



Rosemary Porto of Poggenpohl Boston (left) and Debra Burke of Clarke's Business Development team (right) celebrate winning regional honors in the Sub-Zero Wolf Kitchen Design Contest.

New York Chapter IFDA Selects Makes IFDA a Winner, Too

Submitted by Rose Gilbert, FIFDA, Co-VP Communications and Publications

IFDA is enjoying a high profile in some of the industry's leading-edge showrooms this summer, thanks to the new *IFDA SELECTS* initiative that's spreading from its New York launch to chapters across the country.

Brainchild of designer Rose Ott, New York VP of Social Media, *IFDA SELECTS* awards proclaiming "Best-in-Show" are proudly posted on the walls and in the windows of top design studios and manufacturers' showrooms throughout the design and furnishings industry.

In New York alone, *IFDA SELECTS* judges have scoped out "Best-in-Shows"

at *NY Now* in February, at the venerable *Architectural Digest Home Show* in March, and last month, at the famously edgy *Brooklyn Designs*, and the sprawling *ICFF* in the Javits Center.

And the program continues to gain momentum with other chapters at other industry shows around the US. For good reason, says Rose Ott: "Winners love being recognized. And IFDA shares the spotlight. It's a win-win for everybody."

(Want more information? Contact roseott@roseottinteriors.com)



PROS PASSING JUDGMENT: The panel of *IFDA SELECTS* judges gets ready to scope out Best-in-Show exhibitors at the Architectural Digest Home Show in New York. (From left): Andrea Algaze, Hermine Mariaux, Andrea Brodfuehrer, Julie Schuster, Claudia Giselle Tejeda, Catarine Wright, Stacy Garcia, and Dwayne Clark.



AND THE WINNER WAS.... a totally excited Delah Brucilli of Beneath the Surface, who couldn't wait to post her *IFDA SELECTS* award for the Best-in-Show in the Art category at the AD Home Show.



BEST (AND BRIGHTEST) IN SHOW: At the ICFF, designer and star of BBC's 'House of the Year' Michael Tavano presents the *IFDA SELECTS* award in lighting to Apparatus Studio (cited earlier as a NY Chapter *Rising Star*).



EXCITEMENT GROWS IN BROOKLYN as the *IFDA SELECTS* team assembles at the 12th annual *Brooklyn Designs* event.

IFDA Chapter News

New York Chapter Standing Ovation for Take a Seat, NY

Submitted by Rose Gilbert, FIFDA, Co-VP Communications and Publications, NY Chapter

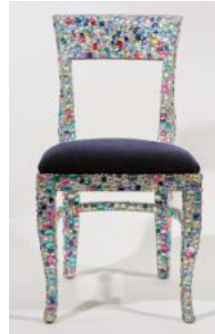
When is a chair more than just a seat? When IFDA design wits and wizards *Take A Seat* to take a stand for New York families seeking a better Home, Sweet Home with the help of Habitat for Humanity New York.

For the third annual *Take A Seat* gala last month, Chapter members and inspired friends upcycled a motley gaggle of past-their-prime seating pieces into works of wonder that stopped traffic on display at ICFF (International Contemporary Furniture Fair) and then set off spirited bidding at the festive auction in the Safavieh Home Furnishings showroom on Broadway.

New York led off the 2015 series of *Take A Seat* ventures planned by six chapters in eight cities across the US. Some 70 percent of the proceeds from each auction will go to a new initiative, Helping Heroes at Home, focusing on local charities such as Habitat for Humanity.



SHOW-STOPPERS AT ICFF -- Upcycled and downright dazzling, TAS chairs starred in the IFDA booth during the International Contemporary Furniture Fair at the Javits Center, NY.



A FLING WITH BLING -- Renowned faux art painter Jonathan Bressler studded his chair all over with pounds of acrylic jewels, secured by a coat of clear epoxy resin



CHAIRS GO TO HER HEAD -- Designer Patricia Fox shows off her tiny tea party, one of a half dozen mini-chair settings she created for TAS.



CUBA SI! INDEED! -- Vanessa DeLeone, designer who stars on HGTV and NBC, celebrated her Cuban heritage with authentic cigars and '50s-vintage autos painted on the back upholstery of her signature creation.

New York Chapter Members in the News

Submitted by Maureen Klein, New York Chapter

Member, Deborah Martin of Deborah Martin Designs, was recently featured in a Newsday editorial entitled "Brass Adds a Warm Glow to Home Decor." Photographs of several of Deborah's residential design projects were featured as the lead cover photo and on subsequent pages to illustrate the popularity of brass as a finish option. The editorial appeared in the March 26, 2015, Newsday Long Island Home Section.

At the invitation of ASID National and Houzz, Deborah Martin of Deborah Martin Designs participated as part of a three-member panel in a CEU accredited educational program for design professionals at this year's International Contemporary Furniture Fair known in the industry as ICFF, which drew more than 30,000 international visitors. Led by Lindsey Thudin, Industry Marketing Manager for Houzz.com, the session entitled 'Leverage, Build and Brand: Understanding How to Create Your Online Presence' focused on how to use and leverage online resources to gain more clients, build your brand and grow your business. Participants learned the best practices for streamlining communication with clients, building a compelling online presence, engaging with an online community, using technology to facilitate storytelling that differentiates your business and protects your reputation and measuring the effectiveness of various online tools and social media resources. This and other ICFF educational programs were featured in the May 8, 2015, edition of *The Wall Street Journal*.

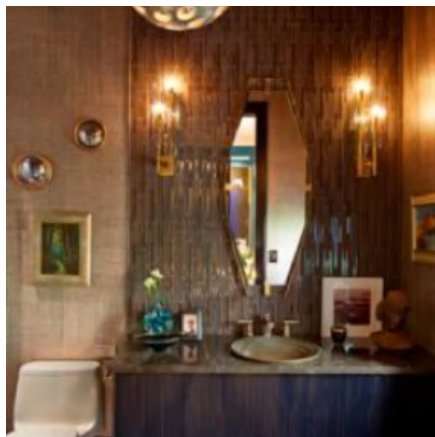
IFDA Chapter News

New York Chapter

Member, Charles Pavarini, Pavarini Design created 'Midnight Manhattan' for the Kip's Bay Decorator Showhouse 2015 presentation.

Submitted by J. Randall Tarasuk, VP Pavarini Design

Pavarini's 'Midnight Manhattan' Lounge represents the interior design firm's latest achievement in Residential Interior Design. Complete with a dry-bar gallery and full bathroom, the design ensemble explores a sensual lapis, aqua, chocolate and crème color and textural palette. The rich chameleon walls feature a base coat of Lapis Blue and top coats of aqua mixed with eye-shadow and finished in strié, resulting in an ever-changing wall finish that varies in effect as it absorbs and reflects light. Rich espresso custom architectural millwork and custom asymmetrical floating cabinetry and shelving accented in stainless-steel marquetry and starburst veneer patterns anchor the complex design scheme. A delicate balance of deep wood finishes and custom millwork, patterned leather, lush carpeting, and a curation of hand-crafted pieces of lighting and furniture, the scheme embodies the synergy of the Pavarini Design philosophy hinging on drama through restraint.



IFDA Fellows

2015 Call for Applications

Deadline for Application Submissions: **October 30, 2015**

[Click here](#) to download the Fellows Application

2015 Fellows Committee

Judith Clark-Janofsky, FIFDA, N.C.A Chapter

Wilma Hammett, PhD, FIFDA, Carolinas Chapter

Merry Mabbit Dean, FIFDA, Texas Chapter

IFDA Chapter News

Northern California Chapter 2015 San Francisco Decorator Showcase

Submitted by Colleen Donnelly, Intern & Student IFDA member, Martha Rosellini Designs

An old house sits atop a hill in San Francisco. It's architecturally stunning, but one could expect nothing less from Julia Morgan, who originally designed the house in 1916. Almost 100 years after it was built it became the [2015 San Francisco Decorator Showcase house](#), and the IFDA Northern California Chapter met at the facet to tour it on a beautiful Friday afternoon.

Sitting in the facet, members had a chance to admire the outdoor art installation. It was just a small preview of what would be inside.

The house and yard were taken over by 27 different San Francisco design firms. Each bringing something unique to the classic house. IFDA-NC members had an opportunity to explore each room, examining furniture, wall coverings, and window treatments. Some rooms were unanimously extolled, others sparked friendly debates.

Passing from room to room was at times like being in a completely different house. To see such a variety of style was thrilling - especially for the newer members.

After touring the house, the chapter mingled with Showcase designers in the backyard, which was also part of the tour. It was a wonderful day for IFDA members to meet each other, other designers, and appreciate a beautiful, old house with modern designs.



**It could take days to read through the new best-seller.
Fortunately, it only takes 15 minutes to see how much
YOU COULD SAVE WITH GEICO.**

Tell us you're a member of IFDA and you could get an additional discount on car insurance. Call 1-800-368-2734 today for free quote.

GEICO
geico.com



Some discounts, coverages, payment plans and features are not available in all states or all GEICO companies. GEICO is a registered service mark of Government Employees Insurance Company, Washington, D.C. 20076; a Berkshire Hathaway Inc. subsidiary. GEICO Gecko image © 1999-2012. © 2012 GEICO.

IFDA Chapter News

Philadelphia Chapter Spring has Sprung with Many Awards for IFDA- Philadelphia Members

Submitted by Deanna Lorenti, IFDA, VP of Communications

Many of our IFDA-Philadelphia members were recognized this past spring with high honors and awards. Here are just some of the members and the list of their awards:

- Janet Stevenson, FIFDA, VP of EF-Foundation & Co-VP of Sponsorship, from Gold Sponsor Closet City, Ltd., earned a *Top Shelf Design Award* at the 2015 Closets & Cabinetry Expo in Chicago, for her "Personal Boutique" dressing room. They also won an *Overall Award* for their perfect score in custom design and professional installation.
- One of our Gold Sponsors, Kieffer's Appliances, won 6 Home Builder Association Synergy Awards. One of the awards was for *Best Showroom*. Their showroom features over 60 appliance brands in a 60,000 square-foot masterpiece. The showroom is adorned with custom designed woodwork and has a seamless look and feel. Clients can see live demonstrations on many of the displays, or get a real-feel experience in the Living Kitchen.
- Laura Hawley, IFDA member, from Ambiance Design, was awarded the *Veterans of Influence Award* from the Philadelphia Business Journal. She was only one of two women to receive such an honor. The program recognizes veterans who have served their country and are now impacting the region's economic health and vitality. Laura also won two NARI CotY (Contractor of the Year) awards: 2015 CotY for Residential Bathroom \$50K-\$75K and 2015 Meritorious Award.
- Melissa Zimmerman, IFDA member, from Brynn Charles Designs, won the Home Builders Assoc. of Bucks/Montgomery Counties Synergy Award for *Best Renovated Room*.
- Holley Pokora, IFDA member, from Idea Design, LLC, won the Home Builders Assoc. of Bucks/Montgomery Counties Synergy Award for *Best Community Clubhouse*.
- Deanna Lorenti, IFDA member & VP of Communications, from Concept 2 Design Interiors, won two Home Builders Assoc. of Bucks Montgomery Counties Synergy Awards: *Best Bathroom-Single Family* and *Best Kitchen-Single Family*.

Congratulations to all of our members!! IFDA Philadelphia couldn't be more proud!!



Janet Stevensen, FIFDA, with her Top Shelf Overall Winner Award



Jace Kieffer, pictured with his wife, Michelle, accepting Kieffer's Appliances 6 Synergy Awards



Laura Hawley, with her Veteran's of Influence Award



Laura Hawley, with her 2015 CotY Award



Melissa Zimmerman, accepting her Synergy Award for Best Renovated Room.



Monica Mackenzie (left), business partner of Deanna Lorenti (right), IFDA member & VP of Communications, accepting their two Synergy Awards.



Holley Pokora, accepting her Synergy Award for Best Community Clubhouse

IFDA Chapter News

Philadelphia Chapter Designing Outdoor Spaces with IFDA-Philadelphia Members Just in Time for Summer

Submitted by Deanna Lorenti, IFDA, VP of Communications

More and more families are moving their living spaces outdoors, so IFDA-Philadelphia decided to design in style at their April event! Members and guests were treated to chef-prepared food and beverages that were provided by our Gold Sponsor, Kieffer's Appliances. Experts in the field discussed the latest products and materials to help design a luxury outdoor space. The following members provided us helpful tips in the areas of:

- John Kieffer, from Gold Sponsor, Kieffer's Appliances demonstrated outdoor kitchens
- Gerry Yost, from Gold Sponsor, Avalon Flooring reviewed which area rug options were best for outdoor use

- Rebecca Stanton, from Gold Sponsor, Bright Light Design Center showed us how to appropriately light up our outdoor space
- Carole Roach, from Silver Sponsor Barlow Tyrie reviewed great outdoor furniture options
- Rand Kehler, from Gold Sponsor, Pindler showed exclusive outdoor fabric collections
- Member, Tom Stone of Stone + Glidden, discussed outdoor audio and home theater

Over 50 people attended our spring event and everyone walked away with some great information to share with their clients!!



Waiting to check people in, from top left clockwise: Stephanie Graham, Co-VP of Sponsorship, Kristen Cossa, IFDA member, Melodie Burkey, VP of Programs/Events, & Ida McCausland, President of IFDA Philadelphia Chapter



Gold Sponsor, Kieffer's Appliances, hosted IFDA Philadelphia's "Designing Outdoor Spaces" event. Delicious chef-prepared food, by Brenda Kieffer, was served throughout the event.



Everyone enjoying good food, wine, and networking. Pictured from left to right: Carole Roach, member from Silver Sponsor Barlow Tyrie, new guests Michael Zoto & Jennifer Abramson, Kathleen Penney, Past President/Advisor of Phila. Chapter, Janet Stevenson, FIFDA, and Pamela Kofsky, member.



John Kieffer from Gold Sponsor, Kieffer's Appliances, and host of the event reviewing outdoor kitchens



Gerry Yost, from Gold Sponsor, Avalon Flooring reviewing outdoor area rugs



Rebecca Stanton, VP of Membership Retention, from Gold Sponsor, Bright Light, talking about illuminating your outdoor space



Carole Roach, from Silver Sponsor, Barlowe Tyrie, showing us some of their outdoor furniture collections



Rand Kehler, from Gold Sponsor, Pindler, showing us beautiful outdoor fabrics



Tom Stone, member, from Stone-Glidden, talking about AV for outdoor spaces

IFDA Chapter News

Richmond Chapter Charles Woods Scholarship Winner Announced

Submitted by Sue Williams, VP – Public Relations



Jonah Hacinas, VCU student and winner of the Charlie Woods Memorial Scholarship

The Virginia Commonwealth University faculty selected Jonah Hacinas, a rising junior, for the Richmond IFDA Charlie Woods Memorial Scholarship. She has a 3.85 GPA in the interior design major, and a 3.65 GPA overall and is one of our most dedicated students. She will start her minor in Crafts and Material Studies in the fall with a course on woodworking techniques.

Notes from the statement she submitted for the department application:

“My goal in Interior Design is to inspire others. I want to make a difference in the world through design, and teaching others along the way...to travel the world, find inspiration in anything, build structures, make memories, and most of all, inspire people. With my major in Crafts, I want to expand my horizons of skills and design. I want to concentrate on wood work and design and create furniture following the geometric side of Art Nouveau.”

Richmond Chapter June Social Event at Crossroads Art Center

Submitted by Sue Williams, VP – Public Relations

Members and Guests gathered at Gold Sponsor “Crossroads Art Center” for the June Social – an evening of fun, refreshments, and networking surrounded by beautifully exhibited work of emerging and established mid-Atlantic artists. The gallery represents more than 225 artists and is a cultural resource as well as an active participant in Richmond’s thriving arts community.

Founded in 2002 by Jennifer Kirby, Crossroads Art Center consists of more than 25,000 square feet of art exhibition space, offers art classes and workshops to the general public, and provides space rental for special events. Crossroads’ broad client base is comprised of private collectors, art and corporate consultants, architects, and interior designers, among others. www.crossroadsartcenter.com



(l to r) Anita Williams, IFDA, VP -- Communications, Diane Williams, IFDA, VP -- Membership, and Amber Linton, VCU student intern for this semester with IFDA member, strolling around the gallery. They pause to pose at a beautiful painting of Red Reeds by Chuck Larivey, a Richmond artist. The subject of the painting is the original glass Red Reeds, which was created by the renowned artist, Dale Chihuly, for the Anne Cobb Gottwald reflecting pool outside the Best Café at The Virginia Museum of Fine Arts.



Jennifer Kirby, founder and owner of Crossroads, hosted the event and welcomes a large group of IFDA Members and their Guests.



IFDA Chapter News

Washington, DC Chapter IFDA-DC Gets an 'Insider's Tour' of the DC Design House

Submitted by Jeanne Blackburn, Immediate Past President, Washington DC Chapter

On April 28, Victoria Sanchez, our chapter Programs Chair, gave us a behind-the-scenes tour of the 2015 DC Design House, from her perspective as a former participant. Sharing details of the house, designers, and design concepts, she shared her view of the house that few of us have ever had. Entertaining and enlightening - to say the least.

The house, a new construction in the northern Virginia suburbs of Washington, DC featured the work of 24 designers throughout the 8,800 square-foot country estate, and was open to the public for four weeks in April and May. This, the 8th annual DC Design House benefitted the Children's National Health Care System, home to a research institute and pediatric surgery.

Speaking from her experience as a previous participant numerous times, and her involvement this year, Sanchez noted that "the DC Design

House is a fabulous opportunity for designers in this area to showcase their talents and increase their visibility in the community".



"Victoria Sanchez (facing camera, guides us through just one of the 28 spaces in the 2015 DC Design House"

Educational Foundation

Raise Your Glass...

Submitted by Joyce Poynton, FIFDA, Educational Foundation Chair



To the winner of the Raymond Waites Design Competition. The winner, to be announced by August 15, 2015, will be celebrated at the High Point International Home Furnishings Market on October 19, 2015, at a reception at 200 Steele Building. The Educational Foundation and noted designer Raymond Waites will present the \$5000 check to the winner. The winning design, as well as that of some runners up, will be on display.

The challenge for the students was to design a Dream Home Entertainment Area with an indoor gourmet kitchen and attached outdoor entertainment space that included a pool. It was to reflect a traditional/eclectic mix of furnishings, products and decoration in tune with today's residential design projects students may find in their future careers. Students were also to design one original outdoor furniture product in the entertainment area that would be suitable for today's manufacturing and marketing.

This is the last of the Waites Design Competitions so come raise a glass of wine to the winner and visit your IFDA friends. Watch your email for further information and time for the reception. But do SAVE THE DATE for this wonderful event and plan your market attendance to be there.

The New Robert Allen Website

Submitted by: Jana Weill, Trade & Showroom Marketing - The Robert Allen Group

Robert Allen has launched a brand new website packed with exciting new features. The innovative color search tool serves as key aspect of the site. Using this feature, designers may search by color palette or upload a photo that is then matched with coordinating Robert Allen fabrics.

The search function has been redesigned with a system of sliders, which enables users to refine a search in real time according to price, availability, usage, and yardage, among other criteria. This designer focused tool enables users to input the exact parameters of their search to achieve the most accurate results.

Robert Allen's new site will also serve as a point of inspiration for designers and designaficionados alike. A new, blog-like section will provide information on collectiongeneses, inspirational projects featuring Robert Allen textiles, and designer interviews.



IFDA Member Benefit Spotlight

IFDA Window Sticker

By Jennifer Jones, MPA, Executive Director

IFDA members can display their IFDA pride and let their customers know they are a member of the leading furnishings and design association by displaying an IFDA window sticker on their business window or door. All members receive an IFDA window sticker upon joining IFDA as a new member. Any member who needs a replacement sticker can submit a request to info@ifda.com. Headquarters will mail a new sticker to members upon request.

Please contact Jennifer Jones, MPA, IFDA Executive Director at jjones@ifda.com or 610-992-0008 if you have any questions about IFDA member benefits.



IFDA IS MAKING IT EASIER TO COMPLETE YOUR SUMMER CHECKLIST

JOIN NOW WITH THE MID-CALENDAR YEAR PROFESSIONAL MEMBERSHIP OPPORTUNITY

EAGER TO GROW AND EXPAND YOUR PROFESSIONAL HORIZONS THIS SUMMER?

Joining the International Furnishings and Design Association (IFDA) mid-calendar year has just gotten easier! Industry professionals who join the Association between June 1, 2015 and September 30, 2015 can now finish the calendar year as members for \$225*.

AS MID-YEAR MEMBERS, YOU WILL BENEFIT FROM IFDA'S COMPREHENSIVE RANGE OF BENEFITS WHICH INCLUDE:

- Listing in the Find An Expert directory on ifda.com
- Discount on IFDA webinar registration fees
- The opportunity to network with other industry professionals
- Leadership opportunities at the international and Chapter levels
- Chapter events and educational programs
- Access to members' only website content
- Membership in the IFDA Educational Foundation
- The opportunity to join IFDA's Speakers Bureau
- Subscription to *Network*, IFDA's quarterly newsletter and the opportunity to contribute newsletter content
- Industry Pass & Buyers Pass to the Semi-Annual High Point Markets
- Use of the IFDA appellation
- Use of the IFDA official logo
- The opportunity to display the IFDA badge on your Houzz profile
- IFDA window sticker
- Discounts on GEICO auto, homeowner, condo and other insurance policies
- Complimentary subscription to *Window Fashion Vision Magazine*
- 15% discount on Teleflora.com purchases
- Discounts on Hertz car rental services

* Eligibility: Individuals joining as new members in the professional membership category. Reinstating and renewing members are not eligible.



Summer Checklist

✓ MAKE MORE INDUSTRY CONNECTIONS

✓ GROW MY BUSINESS / CAREER

✓ BUILD MY KNOWLEDGE BANK

✓ JOIN IFDA!

RATHER WAIT UNTIL AUTUMN?

No problem; finish the calendar year as an IFDA member between October 1 and December 31, 2015 for \$150.

With either option, you will enjoy the perks of IFDA membership until December 31, 2015 - after which time IFDA's annual membership fee of \$350 will go into effect for all mid-calendar and autumn joiners.



DON'T WAIT ANOTHER DAY TO JOIN IFDA!

Follow this link or scan the QR code to get your membership application now!



<http://www.ifda.com/join>



is now available!
Visit ifda.com/join for details.

©2015 International Furnishings and Design Association
IFDA Headquarters
610 Freedom Business Center, Suite 110 | King of Prussia, PA 19406
(ph) 610-992-0011 | (fax) 610-992-0021



IFDA 2015 Network Submission Guidelines

NETWORK EDITORIAL TEAM

Sue Williams, Richmond Chapter, Network Editor in Chief

Judith Clark-Janofsky, FIFDA, IFDA Past President, N. California Chapter Immediate Past President

The goal of the quarterly IFDA *Network* is to inform membership, industry partners, potential members, and the public (potential customers and colleagues) on what IFDA membership is about. Information should be interesting, topical, relevant, timely, concise, and reader-friendly. These are tall orders for a volunteer organization, but vital. We look to feature our members, their contributions to the field, their milestones, and areas of expertise. IFDA *Network* as well as individual chapter newsletters and publications strive to inform, educate, and inspire. Selection of content, both text and photos, are reviewed and may be edited.

Comments may be directed to Sue Williams at ifda-network@earthlink.net.

Submissions are due to Sue Williams at ifda-network@earthlink.net in accordance with the following production schedule:

ISSUE	SUBMISSIONS TO SUE WILLIAMS	SUBMISSIONS TO ACCOLADE	PUBLICATION
Fall	September 4, 2015	September 15, 2015	September 30, 2015
Winter	November 19, 2015	December 3, 2015	December 17, 2015

Local Chapter submissions for consideration: Local Event Summary; Profile of a Fresh Face Member, Chapter Officer, or A Member's Achievement.

Articles of general interest relating to the furnishings and design industry may also be considered. Do you have an idea for an article? Please contact Sue Williams at 804-644-3946 or ifda-network@earthlink.net. Sue will be happy to discuss your idea with you.

Of particular interest this year—please submit your photos and impressions from the various markets/tradeshows you attend. These may be great new products, innovations, notable observations, group shots of you and other IFDA members at the show and even selfies. If you see something astounding, unusual or just plain horrible, include that as well! Send photos with your name, chapter, at which market they were taken and any short personal observations.

Submissions are welcome from each Chapter's VP for Communications/Public Relations, President and the membership at large. All submissions are subject to review and edit for content and newsworthiness.

Submission Criteria

TEXT	PHOTOS
<ul style="list-style-type: none"> • Microsoft doc. or docx, editable form • Universal font e.g. Arial or New Times Roman in 11-12 pt. • Limit formatting enhancements • May use bullet points, paragraphs, etc. • Italicize names of publications, e.g. your newsletter name, magazine articles, and books. • Include appellations as required, such as FIFDA and titles such as Chapter Board President. • Provide url or hyperlinks to websites. The determination of appropriateness of adding a link feature is at the discretion of the Editor and Accolade staff. 	<ul style="list-style-type: none"> • Send via email: photos should be included with the text submission. • JPEG or TIFF files are acceptable. • Photos from 72 to 150 dpi up to 10MB per email can be accepted. Please do not submit out of focus photos or photos less than 4"x5" in size. • Caption people from left to right. Include appellations, such as FIFDA. • Photo credit as appropriate

IFDA INTERNATIONAL SPONSORSHIP OPPORTUNITIES

Are you looking to connect with leaders in the furnishings and design industry?

The IFDA international sponsorship program offers a variety of sponsorship levels. For more information on the benefits of becoming an IFDA sponsor, including your company name and website listed on the front page of *Network*, please contact Jennifer Jones at 610-992-0011 or jjones@ifda.com.

IFDA Welcomes Our 47 New Members

ARIZONA

Professional

TaMeki Njuguna

Maria Scorsetti
Scorsetti Design LLC

Leah Tuttleman
IDC Interiors, LLC

Student

Agnes Abraham
Tamra Anderson
Luna Green
Debbie Nagle

FLORIDA

Professional

Melinda Bonk

Charles Bryant
Charles M. Bryant, LLC

Jaime Camino
Marble of the World

Chris Cavaliere
Cavaliere Electric & Sons, Inc.

Ana Garazi
MautnerRealtyGroup

Steve Grafton
Grafton Furniture MFG

Luis Morales
All Star A/C & Refrigeration Inc.

Jennifer Mostel
Past Perfect
Consignment

Jeffrey Rogow
Jeff Rogow Upholstery,
Rogow Industries Inc.

Sylvia Wallace
Wallace Style Inc.

Sarah Zohar
Sarah Z Designs

MINNESOTA

Professional

Jennifer Hammer
Jennifer Hammer
Interior Design

N CALIFORNIA

Professional

Virgie Vincent
Vergee Design

Student

Colleen Donnelly
Aditi Garud

NEW ENGLAND

Professional

Nancy Dayian
California Closets

Marianne Logan
Luminous Floorcloths

Anthony Miklaszewski
New Dimension Fabric
Protectors & Cleaners

John Speridakos
Cosmos Painting
Company, Inc.

John Trifone
Mitchell Gold &
Bob Williams

Jean Verbridge
Siemasko &
Verbridge Inc.

NEW YORK

Student

AnnMarie Negretti
Rikki Tenenbaum

PHILADELPHIA

Associate

Elizabeth Medvidik

PHILADELPHIA

Professional

Aviole Codio
Ici Design Studio

Jason Pinney
Sherwin-Williams

Brianna Swartley
Tint-Pro

Merrie Turney
Sheffield Furniture

Felicia Wallace-Benton
Daltile

RICHMOND

Professional

Adam Bolt
ProSource of Richmond

Jack Dekorne
Ethan Allen of
Richmond

William Duggan
Duggan Electical

Cameron Hopper
Balducci Additons &
Remodeling

RICHMOND

Professional

Jennifer Kirby
Crossroads Art Center &
Buy RVA Art.com

Sue LeGrand
LeGrand Fine Art

TEXAS

Professional

Cass Hudson
C. Cass Hudson
Organization, LLC

WASHINGTON

Professional

Jacqueline Barlow
Nest 301

Laura Hildebrandt
Interiors By LH

Liza Jones
Liza Jane Interiors

Student

Anna Shargorodsky

Discount on Teleflora Purchases!

IFDA members can receive a 15% discount on teleflora.com purchases. Members will receive a discount when purchases are made through the Teleflora/IFDA partner's web link. [Click here](#) to access the Teleflora/IFDA partner's page.

For more information, please contact IFDA Headquarters at 610-992-0011 or info@ifda.com.

teleflora®

TAKE A CLOSER LOOK AT THE IFDA CAREER CENTER



The International Furnishings and Design Association (IFDA) provides you with the most comprehensive online career center and recruitment site for the furnishing and design industry.

IFDA is dedicated to the furnishings and design industry and its professionals. We provide the best, high-profile and even niche openings locally and nationwide from the industry's leading institutions.

All services are **FREE** to Job Seekers

- Build your own in-depth profile to market your skills & talent
- Upload your resume and update it as often as you want (confidentially, if you prefer)
- Set up a personal Job Agent and be alerted when new jobs are posted
- Review career-search tips and advice from recruiting experts

IFDA Employer Features

- Find the best products and rates to meet your staffing needs
- Use Resume Search to find qualified candidates based on job specific qualifications
- Create an online Resume Agent to email qualified candidates right to your inbox daily
- Use Employer Resources to get help with government compliance, job posting tips and other resources.



Use Promo Code TRYIFDA for 25% off any job posting package!
Visit *CAREERCENTER.IFDA.COM* to get started.

Questions? Contact IFDA Headquarters at 610.992.0011 or info@ifda.com

2015 Board of Directors

President

Diane Nicolson, FIFDA
N. California
diane@nicolsondesign.com

Immediate Past President

Diane Fairburn
Richmond
diane@decorativeglassolutions.com

Treasurer

Linda Kulla, FIFDA
New York
lskulla@optonline.net

Immediate Past Treasurer

Athena Charis
N. California
athenacharis@comcast.net

Director at Large

Robin Gainey
Carolinas
robin@gatecitykitchens.com

Director at Large

Leah Keitz, FIFDA
Florida
llkone@aol.com

Director at Large

Kat Robbins
Philadelphia
krobbsinteriors@comcast.net

Director at Large

Claudia Giselle Tejeda
New York
claudia@claudiagiselle.com

Director at Large

Jane Toland
New England
jutoland@comcast.net

Educational Foundation Chair

Joyce Poynton, FIFDA
Carolinas
poynt207@nc.rr.com

Executive Director

Jennifer Jones, MPA
IFDA Headquarters
jjones@ifda.com

2015 Council of Presidents

Arizona Chapter

Adrienne Hart
adrienne@modascapes.com

N. California Chapter

Gaybrielle Greene
gaybriellegreene@yahoo.com

Carolinas Chapter

Kathleen Koch
kkoch@jk-gallery.com

Florida Chapter

Caroline Baer Rogow
caroline@panachegirl.com

Georgia Chapter

Susan Arnold
sarnold@gwinnettTech.edu

Illinois Chapter

Jeri Solomon
justsolutions@100@comcast.net

Japan Chapter

Kaoru Okeya
blanc-plan@nifty.com

Japan Chapter Contact

Yasue Ishikawa
risabraire@aol.com

Minnesota Chapter

Candy Weisenberger
candy@house2homedesignstudio.com

New England Chapter

Karen Dzenolet
karen@kdzdesigns.com

New York Chapter

Andrea Brodfuehrer
vonbinteriors@gmail.com

Philadelphia Chapter

Ida McCausland
ijminteriordesign@verizon.net

Richmond Chapter

Muffy Barden
muffy@bardensdecorating.com

Texas Chapter

Paula Ross, FIFDA
perdesigns@tx.rr.com

Washington Chapter

David Jorgenson
davidj@kruperflooring.com

2015 Committees

Corporate Membership Task Force

Diane Nicolson, FIFDA, Chair
Patrick Kennedy
Linda Kulla, FIFDA
Elizabeth Salas
Kathleen Penney
Dawn Brinson, FIFDA

Fellows Committee

Judith Clark Janofsky, FIFDA, Chair
Merry Mabbit Dean, FIFDA
Wilma Hammett, FIFDA

Finance Committee

Linda Kulla, FIFDA, Chair
Athena Charis
Diane Nicolson, FIFDA
Candy Weisenberger

Network Committee

Sue Williams, Editor in Chief
Judith Clark-Janofsky, FIFDA
Speakers Bureau Committee
Susan Hirsh, Chair
Judith Clark-Janofsky, FIFDA
Dede Radford

Sponsorship Committee

Diane Fairburn
Linda Kulla, FIFDA
Kat Robbins
Dede Radford

Webinar Committee

Claudia Giselle Tejeda, Chair
Jane Toland, Co-Chair
Athena Charis
James Woodard

Website Committee

Janet Stevenson, FIFDA, Chair
Diane Fairburn
Dave Gilbert, FIFDA
Maureen Klein
Joan Scheib

Dawn Brinson, Carolinas Chapter Representative

Caroline Baer Rogow, Florida Chapter Representative

Website Committee

Elizabeth Zecca, Florida Chapter Representative

James Woodard, N. California Chapter Representative

Andrea Brodfuehrer, New York Chapter Representative

Anna Israel, New York Chapter Representative

Deanna Lorenti, Philadelphia Chapter Representative